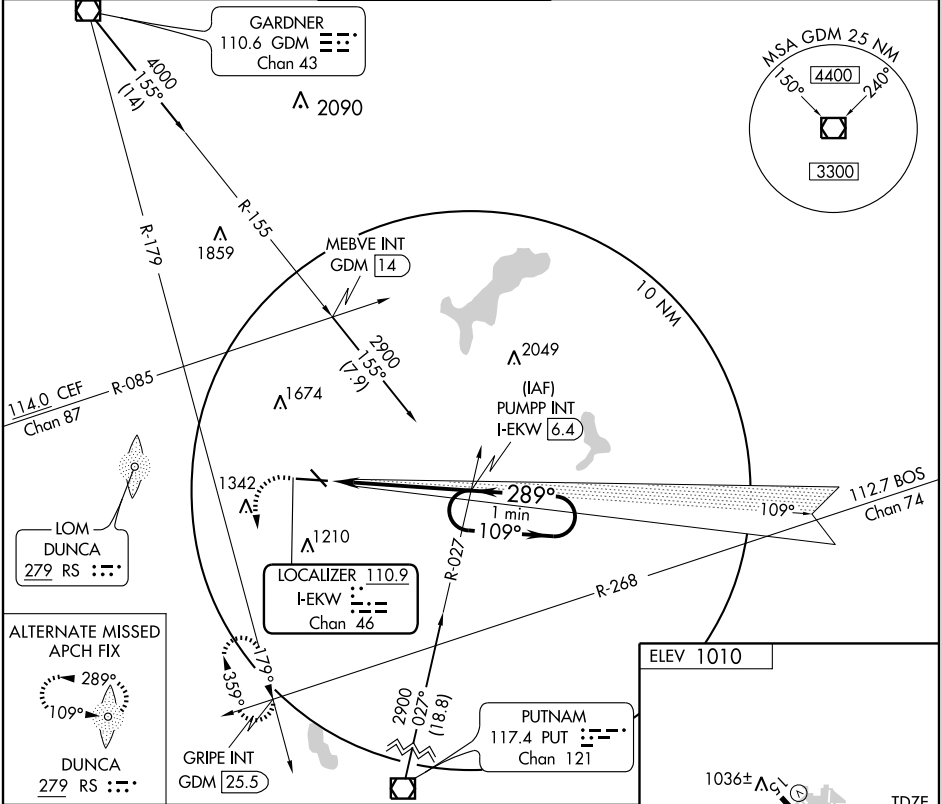


Autopilot coupled approach NA below 1226 feet. DME REQUIRED.

If local altimeter setting not received, use Laurence G. Hanscom Fld altimeter setting and increase all DAs/MDAs 200'.

MISSED APPROACH: Climb to 1600 then climbing left turn to 3000 via heading 240° and GDM R-179 to GRIPE Int/GDM 25.5 DME and hold.

ATIS 126.55	BRADLEY APP CON 119.0 327.1	WORCESTER TOWER ★ 120.5 (CTAF) 263.0	GND CON 123.85	CLNC DEL 128.65	UNICOM 122.95
----------------	--------------------------------	---	-------------------	--------------------	------------------



1600	3000	GDM R-179 110.6	GRIPE INT GDM 25.5	PUMPP INT I-EKW 6.4	One Minute Holding Pattern
↑	HDG 240°				
		I-EKW 1.8	2700	109° → 2700	GS 3.00° TCH 54
		289°	2700	← 289°	
		0.5	4.6 NM		
CATEGORY	A	B	C	D	
S-ILS 29		1191/40	200 (200-¾)		
S-LOC 29		1260/50	269 (300-1)		
CIRCLING	1540-1 530 (600-1)	1640-1 630 (700-1)	1720-2 710 (800-2)	2000-3 990 (1000-3)	
FAF to MAP 4.6 NM					
Knots 60 90 120 150 180					
Min:Sec 4:36 3:04 2:18 1:50 1:32					