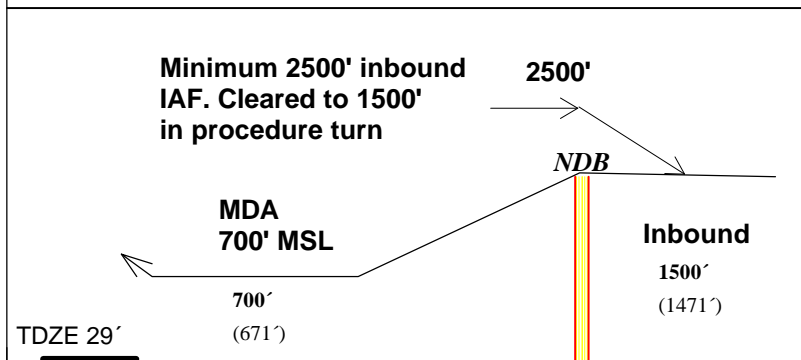
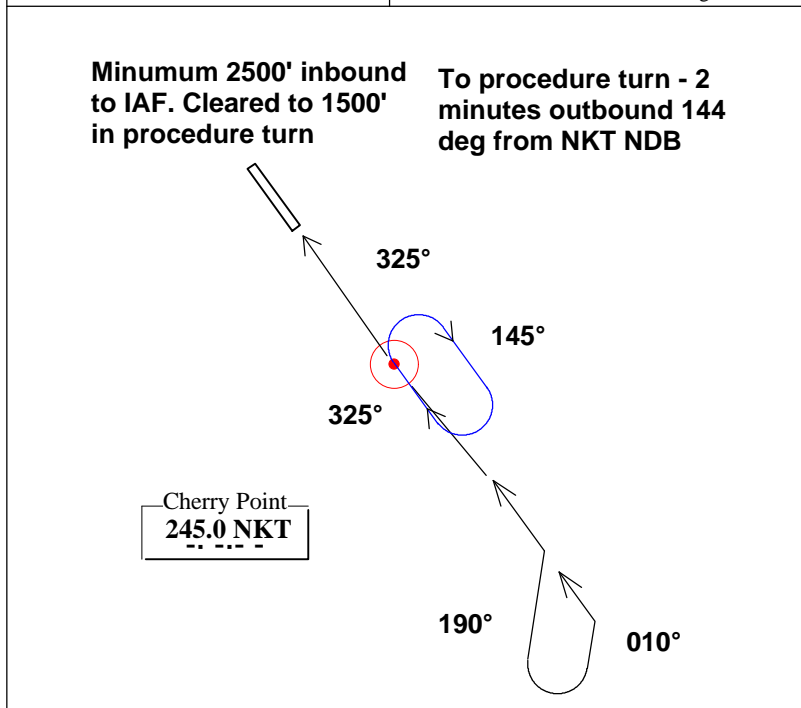


ATIS	CHERRY POINT MCAS (KNKT)
Appr. 119.35 / 124.1	Elev 29'
Tower 121.3	
Ground 128.62	<b>NDB 32L</b>
Cl. Del. 125.95	Not for use in real world navigation

UNITED STATES



**Missed Approach:** Climb runway heading to 2500 MSL, right turn direct to NKT NDB

STRAIGHT-IN APPROACH RWY 32L				CIRCLING	
	MDA	VIS	RVR	MDA	VIS
A		1		NA	
B	700'	1		NA	
C	(671')	1 1/4		NA	
D		1 1/4		NA	
Flight time from FAF to MAP (4.3 NM) at Kts:			70	3:41	100 2:35
			90	2:52	120 2:09 140 1:50 160 1:37
Notes: Cherry Point VOR-DME ONLY is available on the airfield, displaced approx 1.1 nm beyond Rwy threshold. NKT 112.8			<b>MSA Sectors</b> (ft * 100)		