



### **DC-3 Airways World Rally 2010 – Flight one briefing.**

The first World Rally flight begins at Zelienople Municipal Airport in Zelienople, Pennsylvania, USA, and concludes at Washington National Airport in Washington, D.C. The distance is about 196nm and flight time is about one hour and twenty-five minutes.

The early stages of this flight provide DC-3 pilots, both new and experienced, the opportunity to brush-up their NDB navigation skills while honing their ability to accurately get their DC-3 from point A to point B in the presence of cross winds. A few altitude and speed changes are also thrown in. The final approach for landing, though, is the Coup de Gras. That would be the River Visual Approach to Runway 19 of KDCA. That approach follows the Potomac River and is sufficiently complicated to require an Approach Plate. Yes, an Approach Plate for a VFR approach! That's a clue of the fun to be expected. That Approach Plate is included in this package, as well as a section on flying the DC-3 "by the numbers" for newcomers or those who have become a bit "rusty."

To begin the flight in FS9, from the Main Menu go to... Select a Flight / 1.Choose a Category / 2.Choose a flight, and select WR2010-01.

To begin the flight in FSX, from the opening screen select Free Flights, and in the sub menu located above the aircraft image select ... Load / Title and select WR2010-01. To begin the flight when FSX is already open, click Flights/Load and in the Category window select My Saved Flights. In the Title window select WR2010-01 and click Fly Now.

You will be placed at Gate 3 at Zelienople in the default Cessna 172. You now have to change aircraft to your chosen DC-3 and prepare for flight. The minimum suggested fuel load is 280 US gallons (1,680 Lbs).

Enjoy the flight

## WR2010 – 01. Zelienople, Pennsylvania, USA (8G7) to Washington, D.C. (KDCA)

**Warning** this flight was created using Microsoft default scenery. The use of add-on scenery may require an amendment to cruise heights on some flight sections.

**From – To** The symbol  $\pm$  indicates an approximate course.

**Dep. Rwy: 17**

**Init. Hdg: 155deg**

**Init. Alt: 5,500ft**

**Apt Elev: 902ft**

Course (Leg) Deg	Distance (Leg) nm	ETE (leg) HH+MM
------------------------	-------------------------	-----------------------

### **Departure:**

Tune ADF-1 to 287.0 kHz, Nav-1 to 111.00 MHz, and set the Nav-1 OBS to 148deg

Zelienople  
(8G7)  
Penna

Your aircraft is parked at Gate 3 at Zelienople Municipal Airport. Set the DC-3 Mixture to "Auto Rich." Taxi straight ahead and turn left onto the taxiway. Taxi to the end, staying at 20 kts or below, and turn right onto Rwy 17. Lock your tail-wheel and set pitch trim to +3°. Start your flight timer (or relax and let your Goodrick Timer automatically start when reaching 35 kts).

To

Washington  
(KDCA)  
D.C.

If thoughts of taxiing a DC-3 make you ill, although taxiing is a lot of fun, you may directly move your aircraft to the departure end of Rwy 17 and start your flight there. (An old adage states "If you can taxi a DC-3 to the end of the Runway, you can fly it!")

**To Fix 01:** After take off maintain runway heading and climb to waypoint at 2,000ft MSL.....

174

1.3

00+01

**To MKP NDB (287.0):** After takeoff turn to course 156deg. (Be sure to apply your calculated Wind Correction Angle to your heading to maintain a 156° course.) Commence climb to 5,500ft MSL. Unlock your tail-wheel. Fly Direct to NDB. At 5500 ft change the DC-3 mixture to "Auto Lean."

**WCA =** .....

156

30.9

00+13

### **En-route:**

**To CBE NDB (317.0):** Turn left to course 141deg. Fly 140deg outbound course from MKP NDB (ADF Gauge will point to 321deg.) After 10 minutes, tune ADF-1 to CBE NDB (317.0). Adjust heading, if necessary, to fly 141deg course direct to the NDB. **WCA =** .....

141

63.7

00+25

**To TZ NDB (364.0):** Turn right to course 147deg. Fly 147deg outbound course from CBE NDB (ADF Gauge will point to 327deg.) After 10 minutes, tune ADF-1 to TZ NDB (364.0). Adjust heading, if necessary, to fly 147deg course direct to the NDB. **WCA =** .....

147

46.1

00+18

**To Leesburg Airport (KJYO)(Fix01):** Turn left to course 101deg. Fly 101deg outbound course from TZ NDB (ADF Gauge will point to 281deg). After 4 minutes, begin 500 fpm descent to 4000 ft. You will overfly Leesburg airport which is at DME 27.6 from the DCA VOR (111.00). Set NAV-1 OBS to 148deg. **WCA =** .....

101 23.8 00+10

**To Fix02 (Intercept of the 148deg radial to DCA VOR, 111.00):** Turn right to course 111deg and descend to 3000 ft, then slow to 105 kts. Lower flaps to the 1/4 position (one notch) when passing through 130 kts IAS. Intercept the 148deg radial to DCA VOR (111.00) DME should read 13.7.

**WCA =** .....

111 15.6 00+08

**To Fix03:** Turn right to course 148deg and track the DCA 148deg radial to the 10 DME point.....

148 3.7 00+02

**NOTE:** It is advisable to pause your simulator at this point and save your flight. Then record your flight time and remaining fuel. Then, if you wish, you can repeat the River Visual Rwy 19 approach and need only add the short time and fuel consumption of that last leg to those recorded times and fuel consumption numbers accumulated at the 10 DME point.

#### Approach:

From the 10 DME point on the DCA 148deg radial, proceed to Washington National's Rwy 19 following the procedures of attached Approach Plate "River Visual Rwy 19" Carefully note the recommended altitudes vs DME distance from DCA VOR (111.00). Maintain 105 kts and about a 500 fpm rate of descent will keep you in pretty good shape. Stay on the centreline of the Potomac River during this approach until it's time to turn right to land on Rwy 19. Be very certain to avoid Prohibited area P-56 clearly marked on the approach plate.

9.0 00+06

**To Runway:** Go to landing configuration at about 2.0 DME. Turn right to line up with Rwy 19 after passing the last bridge and then land visually.....

2.0 00+02

**Land: Washington National  
Rwy 19**

**Length: 6,869ft**

**Width: 150ft**

**Surface: Asphalt**

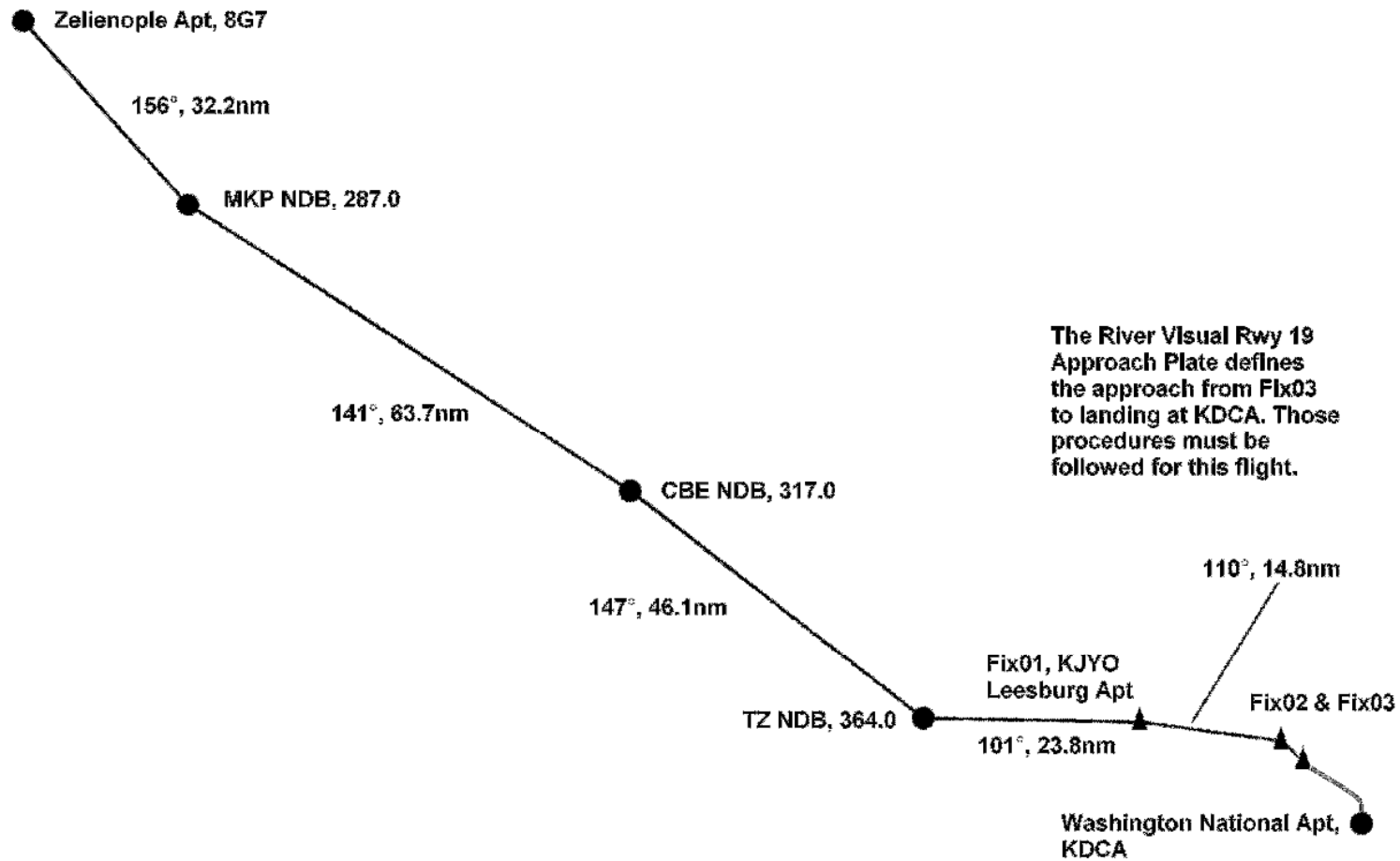
**Flight: 01**

**Arrival Airport Elev: 13ft**

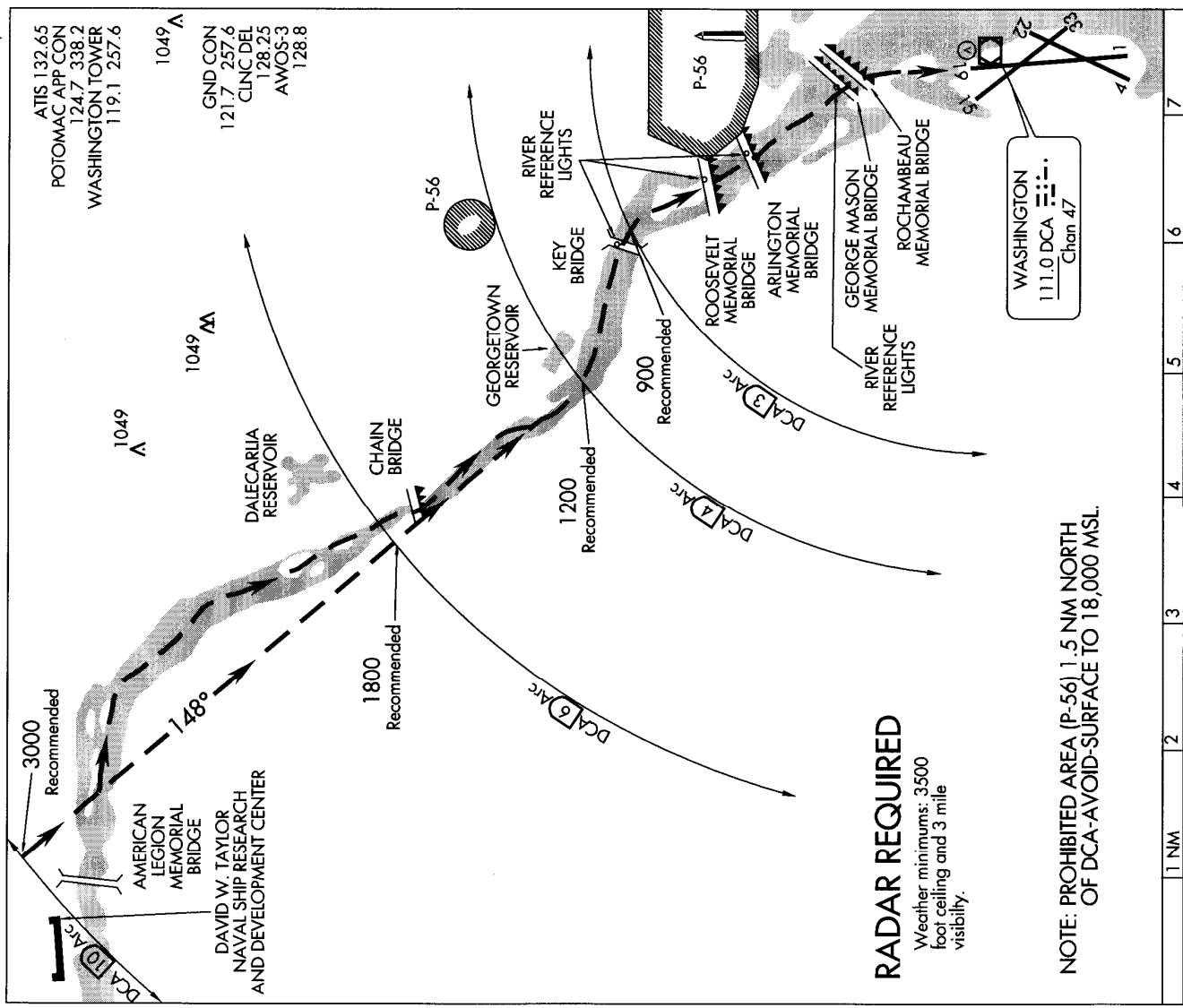
**Estimated totals for this flight >>>**

**196nm 01+25**

# Zelienople, Pennsylvania, USA (8G7) to Washington National Airport (KDCA) ... FSX



# RIVER VISUAL RWY 19 WASHINGTON/ RONALD REAGAN WASHINGTON NATIONAL (DCA) WASHINGTON, DC



RIVER VISUAL RWY 19

NOTE: Clearance for visual approach does not authorize penetration of P-56.

## For Flight Simulator Navigation ONLY

**RIVER VISUAL RWY 19** 38°51'N-77°02'W  
WASHINGTON, DC  
WASHINGTON/ RONALD REAGAN WASHINGTON NATIONAL (DCA)